



The Sun

The Voice of Autism in Delaware

Detachable Monthly Calendar

May/June 2006

Autism Society of Delaware

(302) 472-2638

www.delautism.org

Sunday	Monday	Tuesday	Wednesday	Thursday	Friday	Saturday
May	1	2	3	4	5	6
7	8	9 Parent Coffee Hour 9am	10	11	12	13
14	15	16 ASD Monthly Meeting 7pm	17	18	19 Teen Game Night 6-8 pm	20 ASD Night Wilmington Blue Rocks
21	22	23 Mom's Night Out	24	25	26	27
28	29 Memorial Day Office Closed	30	31			
June				1 Drive for Autism Research Office Closed	2 Office Closed	3
4	5	6	7	8	9	10
11	12	13 Parents Coffee Hour 9am	14	15	16	17
18	19 ASD Monthly Meeting 7pm	20 N.C.C. Support Group	21	22	23 Teen Game Night 6-8 pm	24
25	26	27 Dad's Night Out	28	29	30	



The Sun

The Voice of Autism in Delaware

Detachable Monthly Calendar

July/August 2006

Autism Society of Delaware

(302) 472-2638

www.delautism.org

Sunday	Monday	Tuesday	Wednesday	Thursday	Friday	Saturday
July						1
2	3	4 Office Closed	5	6	7	8
9	10	11 Parent Coffee Hour 9 am	12	13	14	15
16	17	18 Mom's Night Out	19	20	21	22
23	24	25	26	27	28	29
30	31	1 August	2	3	4	5
6	7	8 Parent Coffee Hour 9 am	9	10	11	12
13	14	15 N.C.C. Support Group	16	17	18	19
20 ASD Beach Party Picnic	21	22 Dad's Night Out	23	24	25	26
27	28	29	30	31		



The Sun

Inside This Issue...

- The Kempner's Korner.....2
- Who We Are.....4
- Inside the ASD.....5
- Autumn Auction for Autism.....8
- ASD Walk 2007.....9
- Parent 2 Parent.....10
- Wolf's Words of Wisdom.....11
- ASD Calendar of Events.....12
- Summer Recreational Resources.....13
- Summer Bike Camp ASD Monthly Meetings.....14
- Mom's Night Out Dad's Night Out.....15
- ASD Summer Picnic ASD Day at the Wilmington Blue Rocks Support Group Teen Game Night.....16
- Parent's Coffe Hour.....17
- Parent Coffee Hour.....17

Our Mission

The Autism Society of Delaware is a chapter of the Autism Society of America. We are people with autism, their family members and friends, and professionals who work in the autism field.

Our mission is to improve the lives of people with autism and their families. We will educate, advocate and raise public awareness in order to promote lifelong opportunity and acceptance for people with autism in their communities.

We serve the entire state of Delaware.

ASD Starts its Strategic Planning Process for the Coming Five Years

By: Theda Ellis

They say that if you don't know where you're going, any road will lead you there. ASD has successfully completed two strategic plans over the past six years because we had clearly stated goals such as increasing membership, hiring a director, developing an office, and developing a legislative agenda.

With two successful plans under our belt, it's time to develop our latest and most ambitious plan. To that end, the board hired Mr. Bob Wright of Organizational Associates to facilitate a one-day retreat to help us look at our strengths and needs. With the rapid growth in many directions, it was time to sit down, think about what we have accomplished, where we want to go, and the resources we will need in order to do that.

What have we done well?

ASD is established in Delaware as the umbrella advocacy organization for individuals with autism and their families. Our members are found across the state, and may be active in other autism organizations such as the Lower Delaware Autism Foundation (LDAF) or Healing Autism Now in Delaware (HAND). HAND and LDAF have fundamentally very different missions than ASD, and we work in collaboration with them on common goals for the autism community such as seeking funding for the Family Support Waiver, testifying about changes to the IDEA, and sponsoring the Physicians'

Awareness Project. We anticipate continuing to work together to improve services and supports in Delaware.

- ASD has developed a full range of program and social activities for families. A primary goal has always been to create a sense of community and to offer opportunities for families to both learn about autism and various treatments, and enjoy themselves in a supportive environment. Two years ago families requested holiday activities. Today our social events range from an egg hunt and baseball game in the spring; to a summer picnic, fall hayride, and winter holiday party for children. In between are skating parties and occasional events in Kent and Sussex. We would like to expand social opportunities in our southern counties, and will do so as we recruit local volunteers to take on this effort.

ASD offers ongoing educational opportunities through speakers and workshops and through stipends to conferences. Chapter meetings have slowly evolved from business meetings to presentations by speakers, many of whom are from out of state. We also partner with the Delaware Autism Program to bring in major speakers such as Dr. Michael Powers and Dr. Ami Klin, and this year will be our first joint effort with the Delaware Division of Substance Abuse, Alcohol and Mental Health.

(Continued on page 3)

Contributions for this newsletter provided by:





The Sun

A publication of the
Autism Society of Delaware
5572 Kirkwood Highway
Wilmington, DE 19808
302.472.2638—Office
302.472.2640—Fax

Email: delautism@delautism.org

Website: www.delautism.org

Officers

President: Artie Kempner, 302.777.7273 (h),
artie3boys@aol.com
Vice President: Mike Graci, 302.453.8586 (h),
mjgraci@comcast.net
Treasurer: John Hupp, 302.738.1056 (h),
john96hupp@aol.com
Secretary: Karen Bashkow, 302.453.7411(h),
bashkowk@aol.com

Staff

Executive Director: Theda Ellis,
302.472.2638, ext 202 (w), 302.388.9798 (c),
theda.ellis@delautism.org
Communication Coordinator: Cheryl Kelley,
302.472.2638, ext 203 (w) 302.998.1466 (h),
cheryl.kelley@delautism.org
Office Manager: Margie Rowles,
302.472.2638, Margie.Rowles@delautism.org

Committee Chairs

Adult Issues: Karen Bashkow, 302.453.7411
(h), bashkowk@aol.com
Advocacy/Legislative Affairs: Rob Gilsdorf,
302.378.3462 (h), RobGASD@aol.com
Asperger's Committee: Co-chairs: Heidi Mizell,
302.455.9515 (h), toofers2@aol.com
Penny Chelucci, 302.571.8868 (h),
Penny.chelucci@state.de.us
Finance: Michael Graci, 302.453.8586 (h),
mjgraci@comcast.net
New Parent Support: Cheryl Kelley
(see above) & Mary Kelleher 302.761.9558 (h),
mary.kelleher@delautism.org
Program: Co-Chairs: Dafne Carnright,
302.222.2824(c), djdc900@msn.com, and
Kirsten Landon, 302.239.7852 (h), landonre@aol.com
Public Awareness: Dwayne McMahan,
302.235.2101 (h), DMKemps@comcast.net
Social Events: Nicole Curran 302.368.2468
(h), nicolesmailbox@comcast.net & Robin
Delaney, 302.636.0538 (h),
katejosh1@verizon.net.
Staff Photographer: Nicole Curran
See Above.

County Liaisons

Kent County: Yolanda Flanigan,
302.284.2499, LY1998@netzero.com
Sussex County: Susie Kelly, 302.875.2006
(h), stkelly2003@comcast.net

The Sun Editorial Committee

Marcy Kempner Judy Hedrick
Theda Ellis Amy Justice

Desktop Publishing: Cheryl Kelley



Kempner's Korner

By: Artie Kempner, President

The "Korner" is a wonderful opportunity for me to share my feelings about ASD, its mission and its successes. I have the latitude to write just about anything I want, (well just about anything as long as it's with Marcy's approval). In this column I'm going to jump up on my presidential soap box, just for a bit—so here goes. ASD NEEDS YOU! Yes, in this issue of "The Sun," you will read about all of the wonderful things that our organization is doing—Advocacy in Dover at Legislative Hall, Public Awareness with our bus campaign, the excitement of our Adult Services initiative, the volunteer award recipients at the "Cruise for a Cause," the insightful Adults with Autism Panel, our great social calendar of events—it's quite a list, yes indeed...BUT.. ASD STILL NEEDS YOU!! Why? Because we're just getting started! We're taking the Autism Society of Delaware to the next level. We're hiring a Development Director, a very big step for a group of our size. We are now taking the Adult Study and putting it to practical use. We're in the midst of outlining a business plan to be presented to the State of Delaware to make us a certified provider—that's right a CERTIFIED PROVIDER. This won't happen overnight, and there will be a lot of work to do, but we are taking a proactive and aggressive approach to better serve our autism community... BUT, all that being said... ASD REALLY, REALLY NEEDS YOU!!

We are going to grow our staff, but in order for us to push these programs and initiatives forward, we're going to need YOU. This organization was created thanks to the hard work of so many great parents, professionals and caring volunteers, and we have to continue that tradition and build upon it. It's time for you to step up. Step up for your child, your grandchild, for your niece, nephew, a friend, a student or just because you know that you can help, lend expertise or be an extra set of hands. There are so many "opportunities," you really have some great choices to make.

First off, make sure that you are a member of ASD. E-mail the office at delautism@delautism.org to check on membership status. Join a committee—we've got an adult services committee, a social committee, a program committee, an Asperger's committee, a newsletter committee, an auction committee, a finance committee, a public awareness committee—we've got a committee to satisfy all your volunteer needs.

I've already plagiarized the "Uncle Sam Needs You," campaign, so now let me paraphrase John F. Kennedy; "Ask not what ASD can do for you, but what YOU can do for ASD!"

Thanks in advance—I'm climbing down from my soapbox now, but before I do, remember to call Cheryl, Margie and Theda at the office—they'll find somewhere to plug you in and get you connected to our great group. You won't regret it, heck, you'll really enjoy it.



Strategic Planning

(Continued from Cover)

Special Initiatives.

- Some of our greatest successes are in our special initiatives which weren't even part of the strategic plans. We have worked on the Physician's Awareness Training Initiative for more than 18 months; bringing to the medical community information about the use of parent reporting tools to promote diagnosis and early intervention. We have reached more than 50% of the pediatric specialists, and now we are moving into the childcare community.

Adult Study

Children are children for only a few short years, yet most of the research and program studies are for children. ASD was awarded funding in 2004 to carry out a best practices study for adults. We are currently developing a feasibility study to become a support broker and fiscal intermediary for adults with autism. This is the direction of our future, and is the area that needs the greatest amount of planning.

What else do we need to do?

While ASD is well known in the autism community, we want to be better known within the general and business communities in Delaware. This provides a major challenge for promoting public awareness and fundraising. We've been successful in both areas, but the future of the organization demands that we become more successful if we are to address the challenges of adult life in a meaningful way. ASD wants to offer alternative services to adults who may in some cases, not be eligible for state and federal funding,

and in other cases, require more than available funding providers. As we become a service provider, it may become necessary to "spin off" the service component, so that ASD remains true to its core mission. These are all complex issues to address.

What's Next?

We are embarking on an exciting new course for ASD. As we put together this plan, the vision is to continue enhancing all the family service activities, raise public awareness and advocacy while also starting adult services that will be individualized to meet the needs and desires of our loved ones with autism. This is the wave of the future for adult services, building lives that fit with the person's skills, challenges, and talents rather than trying to fit every person into the same life plan. We want to be at the forefront of this movement. It is big, exciting stuff! But it will take a great deal of hard work, money, and first of all, planning. Thanks to our adult study and the efforts of our Adult Committee over the past 18 months, we are well on our way. But many details still have to be worked out, details that will affect everyone in our community. If you are a "big thinker" and would like to get involved in this most important strategic plan, please contact the ASD office and let your voice be heard. We are going to accomplish wonderful things for all of our loved ones with autism, but in order to that most effectively, we all have to be in it together!

A Big Welcome to the following new members of ASD...

Lisa Mulrooney

Diana Brunoizzi

Melissa Joyce

Allison Puliti

Debra Lyon

Stacy Young

Tracy Hindt

Steven Thomas

John Lynch

Lighting the Way to Hope — 37th ASA Conference

The ASA Conference will be held in driving distance this year, and ASD is offering \$200 stipends to parents and professionals who are members to attend. This is a great year to attend this exciting conference and meet people from around the country.

When: July 12-15, 2006

Where: Providence,
Rhode Island

To inquire about conference stipends, please contact the ASD office. (302) 472-2638.



Who We Are...

In the past few issues of *The Sun*, we have been introducing you to some of the people who help keep ASD up and running. We would like to introduce you now to a few more of our board members. All board members are volunteers and typically are parents of a child with autism.

Marcy Kempner



What do you do?

I am an Associate Director in sports television. I worked full-time for CBS Sports until my oldest son, Matthew, was born, but because of all the travel involved with covering sports, I left CBS to go freelance in 1994 and have worked part-time for various networks since then.

How long have you been with ASD?

My husband, Artie, and I have been involved since the first meeting in 1998 when about 10 of us got together and decided to revive the Autism Society chapter. The original parent group that had been so organized in creating and growing the Delaware Autism Program (DAP)

throughout the 1980's, had more or less imploded in the early 90's, and we felt an acute need to be connected and organized as parents beyond what was being handled by the parent group at the DAP (then CAC, now PAC).

Why do you do this?

One of my first calls after Ethan was diagnosed was to a number listed in a directory I was given for the Autism Society chapter. When I found out the chapter no longer existed, I felt lost. I knew that something was missing, and as we began to deal with the diagnosis, I knew that I wanted to try to make sure that other parents didn't have to go through this without the kind of support I had hoped to find. We weren't sure what we were getting into at the beginning, but with the help of the other founding parents, some wonderful chapter building mentors we met through ASA national, supportive professionals and community members, and many others along the way, we have been able to build an organization that I am extremely proud of. We've made mistakes as we've grown, but it's been an exciting challenge to learn from those mistakes and keep moving forward. I know that my son, Ethan, will have a better future because of all the hard work we've been a part of, and I know that we are making a difference for all people with autism in Delaware as well. Together we can accomplish so much more than any of us can do alone, so that's why I remain passionate and committed to the work of ASD.



Li-

sa Albany

What do I do?

First and foremost, I have 4 children which always keeps me busy; my oldest son, Ted, is 14 and he is autistic. I work full time as Senior Vice President/manager of the lending departments at TruMark Financial in Philadelphia, PA. I oversee the mortgage, consumer lending and commercial business lending areas. I have 25 years of experience in banking.

How long with ASD?

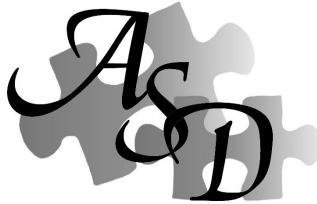
I have been with ASD since 1998 and served as Treasurer from 1999-2002 (before we had the luxury of a bookkeeper). I have been on the board since 1999.

Why do you do this?

It makes me feel like I am contributing to helping the lives of those with autism. The group really does make a difference and has a strong voice in legislative issues in Delaware. There are two compelling reasons for me to stay active in ASD: 1. the difference we make for those with autism and; 2. the compassion and support we get from the organization as a whole.



Inside The



Thanks to AstraZeneca for their Support of The Sun

ASD sends home a copy of *The Sun* to every child in the Delaware Autism Program or one of the pilot projects; and we send it to our members, legislators, special educators, the state library, and many other places as well. Started in 1999, by a grant from the Developmental Disabilities Council, *The Sun* has become the voice of the autism community in Delaware, addressing issues that are much larger than just what ASD is doing. It is our major effort to keep the autism community informed, and it has grown from a circulation of a few hundred to more than 1400 for each issue. Needless to say, it has become a significant portion of our budget; particularly when you consider the staff and volunteer time that go into researching and writing articles, doing the desktop publishing, coordinating dates and times of events for publication, and proofreading. We want to give a big **Thank You** to AstraZeneca for their \$5,000 contribution which will be used to assist with the cost of printing and distributing *The Sun*. It goes a long way in helping the autism community in Delaware.

Development Director

By the time you read this, ASD will have a new staff person joining our team. We are currently recruiting a Development Director to assist us in raising awareness and funding while continuing to support ASD's programs and services.

This individual will take on a major responsibility for working with the media and with community businesses. As the general and business communities learn more about autism, we hope to solicit their support for needed programs and services, and opportunities for job development and volunteer services. Most adults with autism are capable workers when we find the right job and provide appropriate supports for them. We are excited to be adding this position and think it will make a huge difference in our ability to promote the needs of this community.

ASD Awards the Daniel and Lois Gray Memorial Scholarship and the Para to Educator Stipend

Finding qualified teachers is an increasing challenge as the number of children enrolled in school each year rises. To support those who are interested in becoming teachers, ASD has developed two programs.

Daniel and Lois Gray Memorial



Executive Director Theda Ellis and Vice President Mike Graci present Michelle Rosend with a \$1,000 Scholarship.

Scholarship, University of Delaware for Fall 2006

This scholarship is for an undergraduate or graduate student who is planning on becoming a teacher of children with autism. This year, it was awarded to Michelle Rosend, a junior whose major is elementary

and special education. Additionally, she was volunteering at the Brennan School in two classrooms for children ages 6-7 and 8-9. Not the typical college student, Michelle worked as an intern and therapist for three years and "finds each encounter with the profession to be even more fulfilling." Prior to coming to the University of Delaware, Michelle worked at the Magnolia Speech School Demonstration Program in Berwyn, Pa., for young children with autism and apraxia, and she has worked with an 18-year-old woman with autism and bipolar disorder through TeSak, Inc. of Delaware County, Pennsylvania.

Para to Educator Award

This award was developed for para-educators who become teachers. The 2006 award is given to Claudia Blanco of the Seaford School District. Claudia came to the Seaford School District in 2005, originally working as an Instructional Para Educator for students who

were bilingual and in special education. She moved to the autism program last summer. Claudia will receive her Master's degree in Special Education from Wilmington College this spring. While working and attending school, and caring for her child she was certified in Road to the Code, a specialized program to teach

reading. Prior to working as a para-educator, Claudia received her BA in Rehabilitation and worked as a teacher for a child with a traumatic brain injury for five years. She also assisted to help develop a physical education



Inside the ASD

(Continued from page 5)

program to adapt sports equipment for students with physical challenges.

ASD is happy to welcome both women to this community and we are happy to assist qualified people enter this field.

A Very Busy Autism Awareness Month

Early April found many members and the staff of ASD very busy with awareness, legislative, and social gatherings. Thanks to the efforts of the many volunteers who make up ASD we sponsored several successful events. These are things that staff cannot do alone, so hats off to those of you who worked so hard to make the April events stand out.

Our First Spring Egg Hunt

Forty children hunted more than 500 eggs at Delcastle Recreation Center on April 1st. The brainstorm of member Nicole Curran, this was the first time ASD had an event of this kind. Along with Nicole, members Laurie Nicoli and Robin Delaney helped run the event, and Dan Prettyman, with support from his mother Maggie, stuffed all the eggs. The weather was good, and fun was had by all. At least one parent commented that he had not previously taken his child to an event of this type. Our thanks go to all of you who came as well. It's good to know that families appreciate the opportunities we make available.



Parents look on as up to 40 children collect
Collect eggs at the Delcastle Recreational Park



we make available.

Adult Panel Discussion

Sixty family members listened intently to Wolf Dunaway, Stephen Shore and Ruth Elaine Hane describe their experiences with autism. Wolf, who currently works for Social Security as a computer specialist, described himself as feeling like Wile E. Coyote, with autism acting as though a spring would pull him tighter and tighter. He has one hand grasping the neurotypical world, and the autism spring holds his feet and pulls him back to that other world. According to Wolf, "my autism place is a wonderful place where I can relax, de-stress, and think about things without being bothered. The "trick" he says, "is to have balance between the regular world and the autism world. I can't stay too long in either place."

Ruth Elaine described the different ways that children show love. "I used to go to my neighbor's home and spin her rolling pin. She made

wonderful pies, and included me in her household, so that's how I showed her that I loved her, and she understood." Stephen is working on his Ph.D on educational models for children with autism, and he shared some of the things he learned. According to Stephen, "I was the child with the autism bomb at 18 months, and my parents were told to institutionalize me. I was non-verbal until I was four, and now I'm finishing my Ph.D. There is always hope!"

The lesson we learned from this panel—videotape! Even the event organizers were amazed at how powerful this session was.

Smart Cookie Day!

On ASD's "Cookie Day" at Legislative Hall, Joint Finance Co-Chair Joe DiPinto introduced the Autism Awareness resolution proclaiming April 6th as Delaware Autism Awareness Day for 2006. Board member and ASD Legislative Committee Chair, Rob Gilsdorf, addressed the General Assembly and spoke about the impact of autism on families and described how the state legislature was an integral part in the success of our children. All the legislators were once again very grateful for the cookies made by children in all three counties that were delivered by ASD members from across the state. After the session ended for the day, members of

the House and Senate joined several parents and board members for refreshments at a local establishment, The Lobby House. Several members (including Reps Cathcart, Booth, Schwartzkopf, Atkins, Miro and Senators Sorensen, Sokola and Simpson among others)

(Continued on page 7)



Inside the ASD

(Continued from page 6)

stopped by to talk with our members about the struggles we face in our daily lives. They also heard about the dreams we share with our children about their futures.

Cookie Day events are part of the effort to educate the legislature about what autism means to families, and why support to families is so critical. Our legislature has been extremely responsive to our needs over the years and we hope that this year is no exception. This year we are pushing hard for the legislature to fund the Family Support Waiver and we are using every opportunity to have our membership heard. Cookie Day was followed by the Legislative Brunch in Dover on April 13, sponsored by several disability groups including ASD. Legislators who attended included Steve Amick, George Carey, Charlie Copeland, Joe DiPinto, Helene Keeley, Pam Maier, Terry Schooley, Bob Valihura, John Van Sant, and Donna Stone. Tim Brooks, the president of the Arc, and Theda Ellis both presented information supporting the funding of the Family Support Waiver at the brunch.

Between the two events, we have met with 17 members of the legislature during this month. Look for more to come regarding our efforts to promote the Family Support Waiver.

Poster Presentations

A major way to meet potential new members is through community fairs; however with a small staff, it isn't possible for staff to man every community event. In April, member

Judy Jeffers manned the ASD poster for the fair, Safe Kids, held at Bellevue Hall in Wilmington on April 14th, and Judy Smith and Kathie Cherry manned the poster at the First Annual People of Color Mental Health Education Conference for Southern Delaware on April 22. Thanks to all three for their help. For those of you who would like to connect with ASD and don't quite know how, we would like to recruit you to staff community fairs to talk about autism and the Autism Society. Contact the office at (302) 472-2638 if you are interested in this type of event.

Local Autism Awareness Days



The "Cookie Gang" poses out front on the steps of Legislative Hall before setting out to deliver cookies.

LDAF and the Sussex Consortium sponsored a very successful autism awareness event on April 7 with Coach Jim Johnson from Greece Athena High School near Rochester New York. Coach Johnson and Senior Jason McElwain gained national celebrity in February after a remarkable basketball game. Jason, who has autism, had been a basketball assistant for four years before the Coach gave him a chance to play in the last few minutes of the last game of the season. With a packed gymnasium and the entire audience rallying in support, Jason scored 20 points in final three minutes. The entire school erupted in a thunderous applause. Jason was so incredibly proud and

his mother, who equated autism with the Berlin Wall, saw this as the first crack in the wall.

They also featured Janie Miller, a local Special Olympics Coach and parent of a child with autism; and LDAF awarded annual scholarships to students.

In Dover, Charlton sponsored an event with a tour of their wonderful new facility and a presentation by Dr. Peter Doerhing of "All the things you want to know but were afraid to ask about autism." Kathie Cherry and Judy Smith were in their usual leadership roles for this event. Guests visited the new physical and occupational therapy room, the Snoezelin Room, and classrooms as well. It was a nice treat!

Volunteer Recognition

The Cindy Lauper song, *Girls Just Wanna Have Fun* goes for the rest of us as well, and we had a great time at *Cruise for a Cause* sipping on rum punch, munching on great appetizers, and dancing to the steel drum band. Of course, then there were the gamblers!

Gambling is so much more fun when real money isn't involved. This event was also an opportunity to thank key volunteers and other people who have worked hard in the autism community over the past year (see the March/April issue for the volunteer awards). Planned by the volunteer team of Jane Graci, Laurie Nicoli, Alison Kortanek, and Judi Jeffers, the event was a wonderful opportunity to come together as a volunteer community in a fun setting. We met old and new friends, chatted, and best of all, several folks stepped up to volunteer in the future. Thanks to the great organizing team for the event!



Autumn Auction for Autism Unmasking Autism



Tarot Card Readings!

Saturday, October 21, 2006
Greenville Country Club

Magical Oils!

Black Tie—Formal Costumes Optional!

Featuring Music by *The Quake!*

Show Stopping Live & Silent Auction!

Great Food!

2 Great Ways to help out with the auction over the summer...

1 Get involved with collecting auction items.

It's easy! Just contact ASD for an information packet with a guide on how to get items. Some of the categories of items we are looking for are: Wine, Jewelry, Artwork, Holiday Fun, In the Kitchen, Home Décor, plus the always popular Gift Certificates to Restaurants, Spas, Hotels, Shopping and other services. Also popular is Sports Memorabilia and Tickets to Events, and Children's Toys and Games. And don't forget those one of a kind items...they are always a hit!

2 Buy or Sell (Or both) Raffle Tickets.

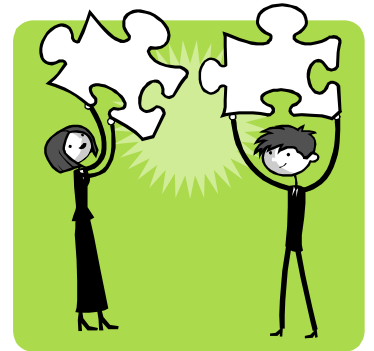
This year we are raffling off a fabulous Trip for Four to Orlando, Florida on American Airlines for Seven Days and Six Nights in a Two Bedroom Suite at the Residence Inn Orlando-Lake Buena Vista with tickets to Disney. Who couldn't use a little R&R in the House of Mouse! Tickets will be made available late this summer. If you would like to purchase or sell tickets, contact ASD and we will make sure you get tickets!

Let's make this year the best Autumn Auction of Autism yet!



Exciting News!!

Next year as part of our Autism Awareness Month activities, ASD will be having a community walk on April 28, 2007. The High Road School of Delaware is supporting us for this event. The walk will be a fun family event that will take place at Bellevue State Park. We are looking to make this a grand event and are in need of volunteers for a committee to support the walk. Volunteers will help with all of the planning to make this event a success. This is a great opportunity to get in on the ground level of a new event if you have never worked with ASD before. If interested in volunteering please contact Lisa Albany at (610) 388-6903.



The Spring Fling Crew wishes to thank the following organizations for making Cruise for a Cause a success.

Cruise for a Cause Table Sponsors:

Astra Zeneca
Hentkowski, Inc.
Morgan Stanley
Currie Hair, Skin and Nails
Tru Mark

Donors: Bixby Caterers, Action Special Event Productions and Rentals, Bellevue Hall Staff, A Kleensweep, Christina River Steel Band, Recycling Express of Delaware, Partnership of the Delaware Estuary, Jane Taylor of Spoiled Girl Jewelry, NKS Distributors, Inc., & The Beltway.

Also thanks to all of the volunteers who made sure the night ran smoothly and that everyone had a good time!



Parent 2 Parent

written by parents
for parents

Bullet Proof Parents

By: Dan Coulter

Ever been frustrated or embarrassed by something one of your kids said or did in public? The stares of strangers can feel like bullets. If your child has an Autism Spectrum Disorder, you may sometimes feel like you've been machine-gunned.

Wouldn't it be great to have a way to deal with these situations that made you bulletproof?

I found something that works sort of like a protective shield — and it's basically a matter of perspective.

Most of us were raised to care a lot about what other people think. That's generally a good thing. It helps us be aware of social rules and interact politely with other people. But when our kids do something embarrassing in public, feeling those painful stares can sometimes cause us to get our priorities mixed up.

Maybe your son throws tantrums. Maybe your daughter makes inappropriate remarks in a loud voice. When my son, who has Asperger Syndrome, was little, he had a tendency to pick up and examine anything that caught his interest. This was a problem, particularly in stores.

People react in a lot of ways to their kids "misbehaving" in public. Too often, I've seen parents act embarrassed and say things to their kids that they might regret later. Most of us don't completely

lose it, but I know there were times when my son was little that I was more impatient with him in public than I should have been.

Now for the perspective part. At the moment our kids do something in public that we wish they hadn't, we're socially conditioned to react by focusing what other people think. But how important is that compared to what our kids need at that moment? Do you have a picture of anyone in the mall crowd on your dresser at home? Have you held anyone in the supermarket line in your arms and rocked him to sleep? Is anyone in sight more im-

“People react in a lot of ways to their kids "misbehaving" in public. Too often, I've seen parents act embarrassed and say things to their kids that they might regret later.”

portant to you than your child?

When you look at things from that perspective, it's easier to dismiss what other people think and focus on your child. First off, why did he do what he did? Many kids with ASDs are impulsive. Something in their brain triggers a behavior that's hard for them to control. What if your son is not defying you? What if he's responding to a stimulus that may take a lot of practice to overcome? In my son's case, it helped to remind him before we went out that he needed to ask and get permission before he picked things up to check them out. We'd remind him again just before we went into a store. Even so, it took quite a while for him to gain

control of that behavior.

Knowing that our kids are prone to certain behaviors helps us mentally prepare to stop what we're doing and deal calmly with the situation. There's a saying in the retail business, "Customers are not an interruption of our work, they are the reason for it." I think the same thing applies to parents and kids. Our job of parenting doesn't stop when we're busy and stressed and in a supermarket — and kids aren't reduced to "interruptions." If your daughter grabs a piece of candy from a shelf and screams when you try and take it from her, the best thing for her may be for you to stop shopping for a moment, kneel down and patiently but firmly explain why she has to put it back. At that moment, being bulletproof to what others might think of her outburst protects you both.

We don't flip a switch to teach our kids and then flip it off. We're teaching them with every interaction we have. If I think of every exchange with my son as one he may remember the rest of his life, will I act differently?

The twist to this is that stopping to deal compassionately and fairly with your child will probably make people who witness his behavior appreciate your parenting skills. And if they don't understand, that's their loss.

Do we care what other people think? Sure. But never as much as we care about our kids.

Copyright 2006 Dan Coulter
All Rights Reserved. Used By Permission.



Thank You!

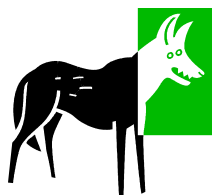


ASD wishes to thank the following for all of their efforts in April for making our Autism Awareness Month a giant success! Without our volunteers we cannot make the impact that we do.

Nicole Curran
 Laurie Nicoli
 Robin Delaney
 Dan Prettyman
 Colleen Grier
 Jen Nardo
 Dwayne McMahan
 Kathy Cherry
 Rob Gilsdorf
 Artie Kempner
 Marcy Kempner

Cheryl Kelley
 Judy Hedrick
 Amy Justice
 Margie Rowles
 Kate Stomerioski
 Karen Shaud
 Chris Knox
 Jen Nardo
 Jane Graci
 Judi Jeffers
 Lucy Graham

Students at the Delaware
 Autism Program
 Susie Kelly
 Yolanda Flanigan
 Alexis Hackett
 Bob Rausch
 Chip Davis
 Pat Murphy
 Mary Kelleher
 Alison Kortanek



Wolf's Words of Wisdom



WOLF Tails - My Autistic Mind at Work:

Neurotypical Humans are much less confusing when you expect everything they say to confuse you. By always expecting confusion humans become easier to understand and lot's of fun to work with!

Just goes to show you HumanZ is the KRAZIEST PeOpLeZ!

Wolf Dunaway was a guest speaker at the April ASD Chapter Meeting.

One of the 36 Dart Buses carrying an ASD bus ad for April. Just one of the many programs launched for autism awareness month.

Thanks to Dwayne McMahan, Public Awareness Chair, for the picture and insuring the signs got out in time.





A S D C A L E N D A R

Childcare is available at all regular ASD monthly meetings. Please contact the office at 302.472.2638 or delautism@delautism.org two days in advance.

ASD Monthly Meetings

- ▶ **May 16** — ASD Monthly Meeting. 7:00 p.m., DAP Brennan School, Newark. Dr. Laura Donnelly of the DAP will be talking about siblings. More information on page 14.
- ▶ **June 19** — ASD Monthly Meeting, 7:00 p.m. Location TBA. National Legislation and Adult Studies. More information on page 14.
- ▶ **July** — **There is no ASD Monthly Meeting in July.**
- ▶ **August** — **There is no ASD Monthly Meeting in August.**
- ▶ **September** — ASD Monthly Meeting. 7:00 p.m. Location TBA. Mr. Ben Shamberger, Social Security Administration. This session will highlight SSI and other Social Security benefits for children and adults with disabilities.

Social Events, Public Awareness & Fundraisers

- ▶ **May 9** — Parent's Coffee Hour, 9:00 a.m. Crossroads Restaurant, Route 7 & Kirkwood Highway. Coffee is on us! Information on page 17.
- ▶ **May 19** — Teen Night DuPont Hospital (1F-51) 6-8 p.m. Information on page 16.
- ▶ **May 20** — ASD Evening with the Wilmington Blue Rocks. Game time 6:05. More information on page 16.
- ▶ **May 23** — Mom's Night Out, 7:00 p.m., Iron Hill Brewery, Wilmington Riverfront. More information on page 15.
- ▶ **June 1** — The Drive for Autism Research. www.delautism.org for information.
- ▶ **June 13** — Parent's Coffee Hour, 9:00 a.m. Crossroads Restaurant, Route 7 & Kirkwood Highway. Coffee is on us!
- ▶ **June 23** — Teen Night DuPont Hospital (1F-51) 6-8 p.m. Pizza provided.
- ▶ **June 27** — Dad's Night Out. Location TBA. More information on page 15.
- ▶ **July 11** — Parent's Coffee Hour, 9:00 a.m. Crossroads Restaurant, Route 7 & Kirkwood Highway. Coffee is on us!
- ▶ **July 18** — Mom's Night Out. Pool party at Nicole Curran's House. More information on page 15.
- ▶ **August 8** — Parent's Coffee Hour, 9:00 a.m. Crossroads Restaurant, Route 7 & Kirkwood Highway. Coffee is on us!
- ▶ **August 20** — ASD Annual Beach Party Picnic, Cape Henlopen State Park, Lewes. More information on page 16.
- ▶ **August 22** — Dad's Night Out — Location TBA.

Support Groups

Parents/caregivers of an individual with an autism spectrum disorder are welcome. (Autism, Asperger's Syndrome, PDD -NOS). The New Castle County evening support group meetings are held on the third Tuesday of every other month.

- ▶ **June 20** — ASD New Castle County Support Group, Wilmington. 7:00 p.m. at the ASD office, 5572 Kirkwood Highway. Next N.C.C Support Group will be held on August 15, 2006.

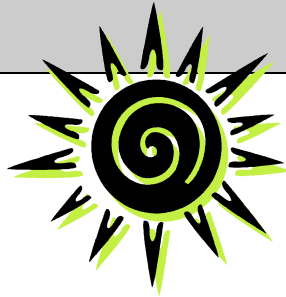
*** Notice: The daytime Middletown support group has been discontinued. If there is anyone who is interested in having a support group in the evenings in the Middletown area, please contact ASD. (302) 472-2638.**

Other Events

- ▶ **May 11, 2006** — DOE/DATI Inclusion Conference. *University of Delaware*, Clayton Hall. For more information contact DATI, (302) 651-6790, dati@asel.udel.edu or visit their website: www.dati.org.



Summer Recreational Resources and ASD's Summer Activity Guide.



Summertime is almost here. Don't be left behind from all of the fun! The remainder of this issue of *The Sun* is dedicated to keeping you in the loop on summer fun and informational meetings. We will start out with a list of recreational resources from around the region. Good luck and enjoy!

RESOURCES FOR RECREATIONAL ACTIVITIES

The following camps and facilities are in no way associated with the Autism Society of Delaware and are being provided as information only.

The Autism Society of Delaware is in no way responsible for the programs, their content, structure or guidelines.

- ◆ **Delaware Special Olympics**
619 S. College Ave
University of Delaware
Newark, DE 19716-1901
(302) 831-4653
www.sode.org or

546 S. Bedford Street
Room 2125
Georgetown, DE 19947
(302) 855-0546

- ◆ **Lauber's Karate Plus**
Camp Lauber runs from the time school lets out until it goes back to session.
Rte 40
Bear, DE
(302) 836-826

- ◆ **TOPP Soccer @ Kirkwood Soccer Club**
1220 River Rd
New Castle, DE 19720
(302) 322-4220

- ◆ **TOP Soccer @ Hockessin**
Hockessin Soccer Club

740 Evanson Road
Hockessin, DE
(302) 234-1444
www.hockessinsoccerclub.com

- ◆ **Topp Soccer Schutte Park for Kent County**
Central DE Soccer Association
(302) 697-8331
- ◆ **Farm of Dreams (therapeutic horseback riding)**
2325 S. DuPont Highway
Smyrna, DE 19977
(302) 653-6731
- ◆ **Southern Delaware Therapeutic Horseback Riding**
R.D. 1, Box 233A
Lewes, DE 19958
(302) 644-1920
- ◆ **Mary Campbell Center**
(Recreational programs and summer day camp)
4641 Weldin Rd
Wilmington, DE 19803
(302) 762-6025
- ◆ **Challenger Division Little League for Youth with Disabilities**
www.littleleague.org/divisions/challenger.asp
Contact: Lisa Johannsen
(302) 378-2530 (h)
- ◆ **Camp Lee Mar**
450 Route 590
Lacawaxen, PA 18435
(570) 685-1708
www.leemar.com

- ◆ **Summer Day Camp United Cerebral Palsy (They accept autistic children)**

New Castle County:
UCP Center
700 A River Road
Wilmington, DE
(302) 764-2400
Contact: Pauline Mayfield

Kent & Sussex County
UCP Center for Southern Delaware
3249 Midstate Rd
Felton, DE
(302) 335-5626

For financial aid, you may apply for Purchase of Care through the Department of Social Service @ the Hudson Center.

- ◆ **Easter Seals Camp Fairlee Manor**
22242 Bay Shore Rd
Chestertown, MD
(410) 778-0566
www.de.easterseals.com
fairlee@esdel.com
- ◆ **Freedom Hills Therapeutic Riding program**
55 Rolling Hills Ranch LN.
Port Deposit, MD 21904 (410) 378-3817
<http://www.freedomhills.org/about.html>
- ◆ **Camp Greentop The League for People With Disabilities, INC**
1111 E. Cold Spring Lane
Baltimore, MD 21239
(410) 323-0500 ext 366
www.campgreentop.org
- ◆ **Summit Camp**
Route 371
Honesdale, PA
(800) 323-9908
www.summitcamp.com



Summer Recreational Resources and ASD Activity Guide

(Continued from page 13)

- ◆ **Camp WISP**
301 Camp Meeting Rd
Sewickley, PA 15143
(866) 893-4751 ext. 2889
www.dtwatson.org
- ◆ **Aaron's Acres (This camp is also open to siblings)**
1901 Olde Homestead Lane
P.O. Box 10485
Lancaster, PA 17605
(717) 368-1372
www.udservices.org

Summer Activities in Sussex

2006 Adaptive Bike Camp

Aug. 28, 2006 - Sept. 1, 2006
Hosted at Mariner Middle School

It's summertime and the Lower Delaware Autism Foundation is once again sponsoring two major recreational events for children with autism. This year will be their third year to offer the Adaptive Bike Camp. Through this series of intensive sessions using a variety of adapted bikes, children progress towards the goal of learning to ride a regular two-wheel bike.

LDAF will also be sponsoring a summer swim program on Friday, dates and location to be announced. Check out www.ldaf.com or call (302) 644-3410 for more information about either program.



ASD Chapter Meeting- Siblings

When: May 16th, 2006 7-9PM

Where: Delaware Autism Program (DAP) Brennan School, Newark.

Call to RSVP for Childcare by Calling ASD at 302-472-2638

Special Guest Speaker: Dr. Laura Donnelly of the Delaware Autism Program (DAP).

Dr. Donnelly will be talking about siblings of children with autism and their experiences, strengths, needs and the workshops she offers through the DAP.



ASD Chapter Meeting- Legislation

When: June 19th, 2006 7-9PM

Where: TBA

Call to RSVP for Childcare by Calling ASD at 302-472-2638

Special Guest Speaker: Steve Eidelman, Edelson Professor of Disabilities Studies, University of Delaware.

This session will highlight national legislation and how it would impact families of children with disabilities. It will also talk about the new Edelson Chair of Disabilities Studies. This is the first position of this type in the nation, emphasizing research and services for adults with disabilities.





Girls Just Wanna Have Fun... Don't Miss Mom's Night Out!!

Here is the summer schedule for Mom's Night out for New Castle and Kent County.



New County

Castle

May 23 — Iron Hill Brewery at the Wilmington River Front, 7:00 p.m. Weather permitting, we can sit outside and enjoy the weather along the river front!

July 18 — Pool Party at Nicole Curran's House, 7:00 p.m. We will supply the plates, chips and soda. You bring your favorite appetizer or dessert and wine if you like!

To RSVP please call Monica McMahan at (302) 235-2101 or email:m.mcmahan28@comcast.net

Kent County

July 11 — 1/2 Price burger night at the Lobby House, 7:00 p.m. Don't miss this chance to meet up with other Kent County moms!

September 13— Location TBA

To RSVP please call Kate Stomieroski (302) 734-4884 or beazelbeak@juno.com

Dad's Night Out

June 27

Time and Location TBA

(They always wait till the last minute to plan things!)
Who can go? Dads, Uncles, Grandfathers or Friends of those living with autism.

Interested? Of course you are!
Contact: Mark Frampton
(302) 998-1466 or
Mark@designbycher.com



Next Dad's Night Out
August 22.

Check It Out!

Summer Camp for Kids with HF
Autism and Asperger's Syndrome
Presented by the Rocky Run YMCA.
(Just over the line in Pennsylvania on
Route 1)

Grades: 1st-5th
Hours 9 a.m.— 4 p.m.
Staff/Camper Ratio: 1:3

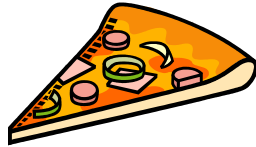


Visit: www.rockyrunymca.org
Click on Summer Camp then on
Camp New Horizon or call
(610) 627-9622



ASD Teen Game Night! For Individuals with HFA/AS

Game nights will be held at the DuPont Hospital for Children In room 1F-51 (back of cafeteria) from 6 p.m.—8 p.m.



Come join us for Pizza and Games!

Teen nights will be held on: May 19th, June 23rd
Please RSVP by May 17th for the May 19th game night and by June 21st for the June 23rd game night.

Call the office at: (302) 472-2638.
This game night is intended for teens ages 13-19.



Hope we see you there!

Autism Society of Delaware Support Group

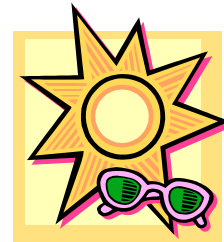
Feeling overwhelmed? Not sure what to do? Frustrated? Scared? Well you are not alone. Take some time for you and join the ASD Support Group. The ASD Support Group is a great place to start things moving "forward" again.

The support group is moderated by professional Kathy Hupp, who also happens to be the parent of a child with autism. Support groups are held on the third Tuesday of every other month (opposite months of Mom's Night Out.)

Next support group will be held on June 20, 2006. Following support group will be on August 15, 2006. Time: 7:00 p.m. Location: ASD Office 5572 Kirkwood Highway, Orchard Commons, Wilmington, DE 19808. No RSVP needed.



Summer Fun in the Sun



ASD will be holding it's 8th Annual Summer Picnic at Cape Henlopen State Park, Lewes, DE.

August 20th 10 AM to 4 PM Rain or Shine.

Lots of Food, Games, **food**, swimming, **food**, **sand**, and did we mention, **FOOD**? We'll provide hotdogs, hamburgers, rolls, and drinks. You bring a side dish, dessert, (or maybe both!) to share, beach towels, chairs, OH...and the kids, too! There will be a train ride and an obstacle course. This is one of our most popular events so don't miss out on a great day of fun at the beach!

Please RSVP by August 16th, so we can have enough food. Email: delautism@delautism.org or (302) 472-2638



Are you on the ASD eGroup? Want to keep up to date on all of ASD's social events, meetings and legislative affairs?

Sign up today!

All you have to do is send an email requesting to join the group to delautism@delautism.org.

This group is not a discussion forum. Only staff in the office can post to the group, so you will not be overwhelmed with messages.

PARENT'S COFFEE HOUR

The Second Tuesday of Every Month

Crossroads Restaurant,
Kirkwood Hwy, Wilmington.



Moms, Dads, Grandparents or Anyone with a connection to autism is welcome to attend. Little Ones not in School?

No Problem, Bring Them Along, too.

Just Show Up at 9 a.m. and Ask for the Autism Table. Coffee is on US!



Want to help?
Have talents or time to offer?
Become an ASD Volunteer today!

ASD's success is due to all of our wonderful volunteers! We have several committees that always need help, including: *Adult Issues, Asperger's, Legislative, Social Events, and many more...* Give us a call today and we will try to match you up with something that best fits your talents and interests!
(302) 472-2638.

ASD Options Policy

All information provided or published by the Autism Society of Delaware (ASD) is for informational purposes only. Reference to any treatment or therapy option or to any program, service or treatment provider is not an endorsement by ASD.

You should investigate alternatives that may be more appropriate for a specific individual. ASD assumes no responsibility for the use made of any information published or provided by ASD.

Next Deadline for Submissions to The Sun:
, 2006

Want to share a story? Have an idea for an article? Send it to ASD today!

delautism@delautism.org

Or mail it to us.

Let Your Voice Be Heard!



ASD reserves the right to edit for space and content.

Autism Society of America Membership Application

Please enroll me in the following category:

Student \$15 Individual \$30 Family \$40 Outside USA \$50 Professional \$100 Agency \$500
 Life \$1,500

I am a new member I am renewing membership

Name (s): _____

Address: _____

Phone: (h) _____ (w) _____ Email: _____

Employer or professional background: _____

I am joining through ASA's local chapter named the Autism Society of Delaware.

I am a: Parent Family Member Service Provider Educator Medical Professional
 Individual with Autism Other (please describe): _____

Yes! Please add my name to the mailing list to receive ASD's newsletter *The Sun*. (***This is for families who do not receive The Sun through DAP Distribution only please.***)

My membership fee is.....

I would also like to contribute this amount directly to ASD

Total amount enclosed (add both amounts).....

\$ _____
\$ _____
\$ _____

Date: _____

Please make your check payable to the Autism Society of Delaware to

ASD, 5572 Kirkwood Highway Wilmington, DE 19808. All membership fees and contributions are tax deductible.

aware (ASD) and send the check and application to

The Autism Society of Delaware
5572 Kirkwood Highway
Wilmington, DE 19808

Non Profit Org.
U.S. Postage Paid
Permit # 317
Newark, DE

